

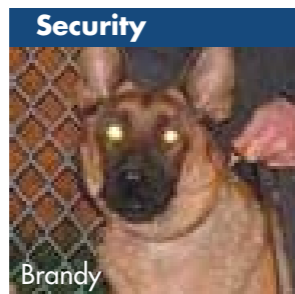
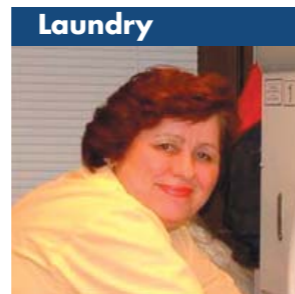
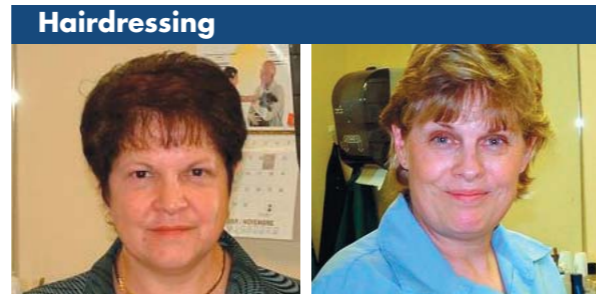
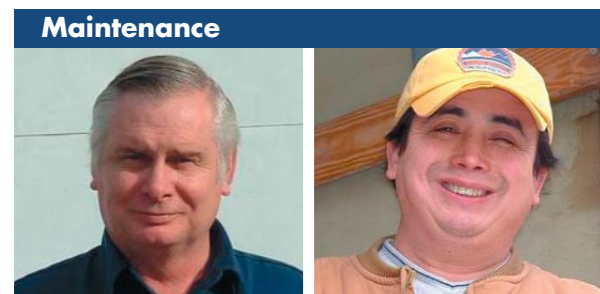
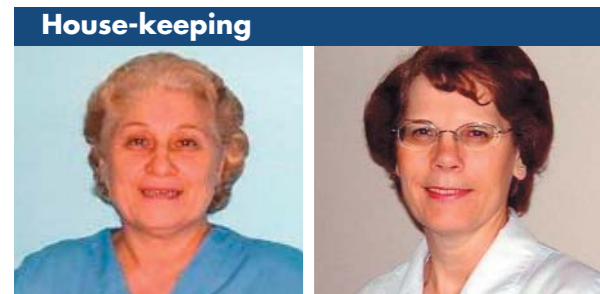
# SOME OF THE SUPPORT TEAM WHICH KEEP BETHANY MANOR OPERATING SMOOTHLY....



# Broadcaster

An Information Journal of Life at Bethany Lodge

December 2005



Our new website was launched on June 10, 2005. In addition to many new features, we are pleased to announce a photo link with the Blackthorn Construction website ([www.blackthorn.ca](http://www.blackthorn.ca)). Regular updates will keep you informed of the Unionville Bethany Lodge rebuild. Visit the new web site at [www.bethanylodge.org](http://www.bethanylodge.org)

35 Years of Excellence



## THE REBUILD: ANSWERED PRAYER

Mike Da Silva, G.S.C.  
Blackthorn Project/Construction Managers



So we thy people and sheep of thy pasture will give thee thanks for ever. *Psalm 79:13*

We are very thankful to our Lord for the kindness He has shown us at Bethany Lodge. I am unable to write of every account of the Lord's goodness to us in this project but this short article has been written to highlight three of these events.

First, some will recall that a Re-zoning Meeting was held at the Markham Township offices. These meetings provide neighbours with the opportunity to show support or their displeasure - the latter being the usual case. A complaint by a neighbour at this stage can delay a construction project by six months. Everything is put on hold until the neighbour's issues are addressed and resolved. At Bethany's Re-zoning Meeting, however, all the neighbours that spoke were in favour of the Bethany Lodge Redevelopment. The Markham Council members had never seen a construction project so readily endorsed by the community and by its members, thus the councilors unanimously cleared the way for Bethany to proceed with the site plan approval.

Secondly, the Lord added his kindness to us at the Committee of Adjustment Appeals meeting. Again, not one neighbour attended to show any displeasure for the project.

Thirdly, at the Town of Markham, several departments could have bottlenecked the approvals for a building permit, but, one by one, we were given authority to proceed before complete department sign-off.

These are a few of the significant events that God has brought us through. Our architect told us that he has never seen this process go so quickly. For this, we are truly grateful to our God.

If I were to thank all the individuals that helped make this happen, the Broadcaster would not be large enough to contain their names. I would like to acknowledge the team which includes the Board of Directors, administration, staff, various committees, and the volunteers - not to mention the fervent prayers of God's saints. It was a privilege working with Mr. Ed Hannah in particular - there were city officials who remembered him, and his hard work for Bethany over 30 years ago. Our visits to the Markham Township offices were so frequent that there were times the city officials wondered if we were on their payroll! We would often arrive at the offices before most of them came to work, and still be there after 4:30 pm when the big exodus would begin. I once introduced the two of us as 'Mr. Bethany' and 'Mr. Lodge'. (I, of course was 'Mr. Lodge' since I've put on a little weight.) It certainly makes things easier when there has been a tremendous testimony established, which we were able to tap into, and see first hand.

The project is progressing with great success. The architects, engineers, and city officials are very pleased with the progress. I personally take great pleasure in reporting that we are ON TIME, and on BUDGET. Our goal is to have the roof on by early in the New Year.

Please continue to pray for us as we work through the construction stage. We would ask for your prayers that the project will be completed on time, on budget, and that the workers on-site will be kept safe from harm and danger. For this, we shall give all the glory and honour to our Lord and Saviour.

### In This Issue

- Answered Prayer . . . . . 1
- The View From Here . . . . . 2
- Bethany Benefit Dinner . . . . . 3
- Kiek-Seong Gaw turns 100 . . . . . 4
- Volunteers Welcome . . . . . 4
- Financial Updates . . . . . 4
- Bethany Manor Support Staff . . . . . 5

View The New Bethany Being Built.. Live...  
On-Site Web Cam  
[www.bethanylodge.org](http://www.bethanylodge.org)  
[www.blackthorn.ca](http://www.blackthorn.ca)

### Donation Pledge

- I am interested in receiving the **Bethany Broadcaster** at home
- I would like to make a donation to the **Bethany Lodge Foundation** (see box below)

Name \_\_\_\_\_  
Address \_\_\_\_\_  
City \_\_\_\_\_ Postal Code \_\_\_\_\_  
Phone \_\_\_\_\_ E-mail Address \_\_\_\_\_

\$ \_\_\_\_\_ Cheque enclosed (Charitable Donation Receipt Will Be provided)

Tax Registration # BN89320 7647 RR0001

All mail must be sent to the original address:  
**Bethany Lodge, 23 Second St.  
Unionville, ON L3R 2C2**

# THE VIEW FROM HERE

- observations of a third-floor Manor resident

One of the first indications of work was the erection of a six-foot high fence around the site. This was done for safety reasons, and to keep us OUT! Many of the trees were cut down and ground up by a machine. The 'chosen ones' that remained were hedged about by a board fence for protection and preservation.



## Demolition

Beginning at the south west corner, the Lodge building was knocked down by a crane, who's double 'teeth' made a grab at a whole section and pulled it away. The different materials

that were salvaged were piled separately – scrap metal, wire, wood, aluminum, etc. – for disposal. Everything was done 'decently and in order (1 Cor.14:40). As the demolition neared completion, there was a half room visible. On the wall was a clock, still ticking away and showing the correct time! It was fulfilling it's purpose, despite destruction and chaos all around!

## Construction

The construction workers arrived on site during the last week of July. Architects had been working on their plans for months, and now, their 'yard-wide' drawings were available for the direction and guidance of the workers. All the



specific details of the structure were illustrated. In like manner, Christians have the Bible for direction and the Holy Spirit for guidance.



## The Foundation

Surveyors came to the site, using their instruments to mark off the outline of the building. As the trenches were being dug, the surveyor kept measuring their depth

with his rod. This rod is linked by laser beam to the instrument on top of his tripod. When the proper depth is reached, there is a 'beep'. The foundation must be perfectly level.

The machine operators, surveyors, carpenters, etc. are all working together towards a finished building which will be a credit to their workmanship. (11 Timothy 2:15) The apostle Paul wrote, 'You have been built on the foundation of the apostles, Jesus Christ himself being the chief cornerstone.' (Ephesians 2:20)

## The Building

Early in October, the bricklayers arrived on the scene, laying the cement blocks on the foundation forms. They worked quickly and with precision, using their levels frequently to ensure straight, even walls. Later, the steel beams arrived. They were of various lengths and shapes, but each one fitted exactly into it's own place on the footings and walls. This step brought a sense of continuity to the structure and we can begin to identify rooms, hallways, etc.



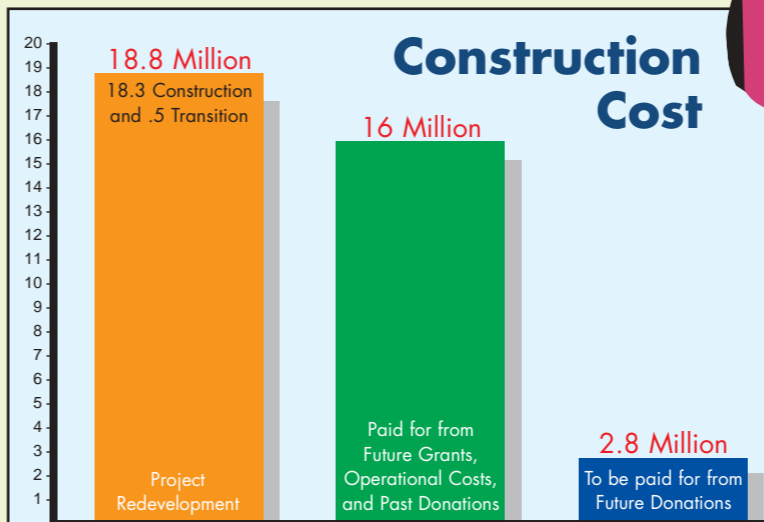
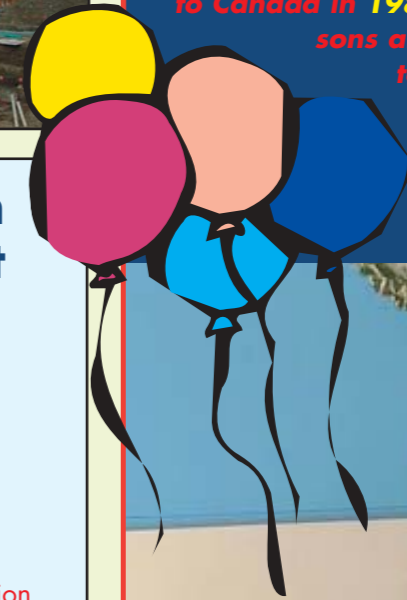
Cement slabs were secured on the beams, then the second floor walls of cement blocks began to go up. The walls are too high for me to see what is going on inside!



# HAPPY 100TH BIRTHDAY

## Kiek-Seong Gaw

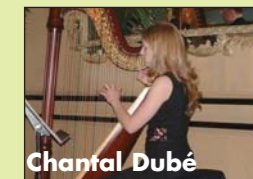
recently celebrated her 100th birthday. Born in Burma on November 15, 1905, she emigrated to Canada in 1985. Some of her family of five sons and three daughters were able to attend the celebration party held at Bethany West. We congratulate Kiek-Seong on attaining this milestone birthday!



Monies Raised from January 1 - Nov. 15, 2005 - \$366, 677 . The Lord has graciously provided these funds through the kindness of our friends' generous bequests, individual gifts and assembly donations. **Thank you for your continued support.**



# Bethany Lodge Benefit Dinner



Chantal Dubé



Hiram Joseph

Once again, your are cordially invited to attend the Bethany Benefit Dinner scheduled for Friday, March 31, 2006. We look forward to welcoming our repeat guest, Chantal Dubé harpist, and a new entertainer, Hiram Jospeh, tenor.

With a musical background in both piano and harp, Chantal has been performing at special occasions since 1996. She also teaches piano, harp, keyboard and Kindermusik in the Brampton area.

Hiram Joseph committed his life and voice to the Lord at the age of fifteen. Since then, he has performed world-wide with such celebrities as Billy Graham, Tony Campolo, John Wesley White, John MacArthur and the late Terry Winters. He is presently artist in residence at The People's Church in Toronto and will be featured on 100 Huntley Street December 22 for a Christmas Special.

Please visit our website [www.bethanylodge.org](http://www.bethanylodge.org) for further details. Tickets purchased prior to December 31, 2005 will be eligible for a 2005 tax receipt.

# VOLUNTEERS WELCOME

New volunteers should contact Christina McKenzie at 905-477-3838 Ext.232

Have you considered volunteering at Bethany West? With the residents spread over three floors, extra hands are always welcome, especially at meal times.

Transportation is provided, Monday to Friday from the east lobby of Bethany Manor. The taxi leaves at 9:45 am and returns 1:45 pm. Please sign your name in the Bethany Manor lobby 24 hours in advance.